

INDUSTRIAL DOOR SOLUTION MODEL IDS ROLLING SECURITY GRILLES

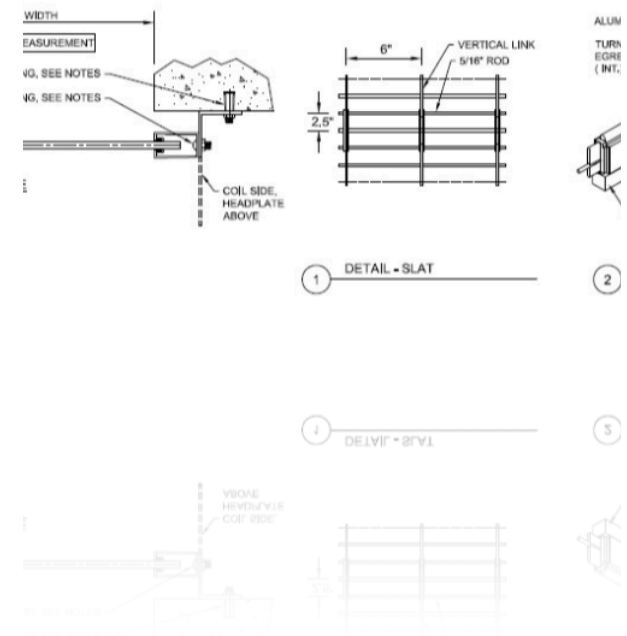
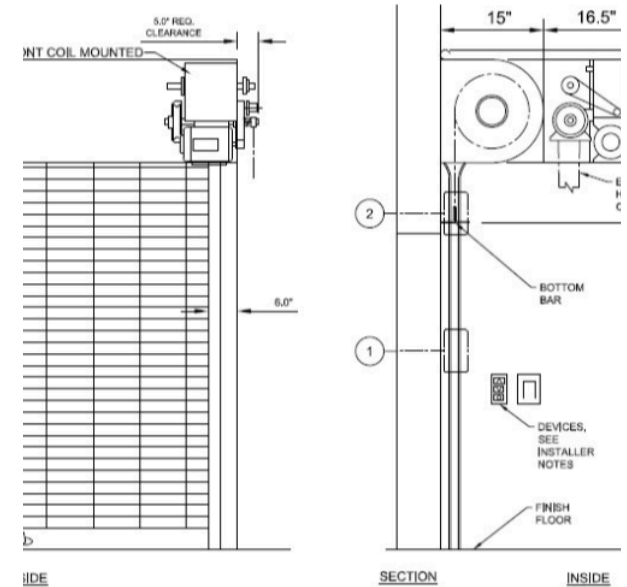


IDS Rolling Grilles are designed for security and ease of operation. The superior construction and quality materials utilized by IDS guarantees a long life for all of our steel grille doors with limited maintenance. Our trouble-free coiling grille doors are built to order to fit your opening size. All grilles have been proven for use on thousands of installations where coiling grilles are required for business and industry. Constructed of solid or hollow 5/16" hot-dipped steel rods covered with Aluminum, PVC or Stainless steel sleeves connected with vertical aluminum links available in the brick pattern or straight pattern.

Rolling Grilles by Industrial Door Solution

Rolling Security Grilles

APPLICATION USE
Grilles offer security, protection and ventilation. Grilles provide the ability to visually observe what is behind the door when fully closed. Ideal for store fronts, malls, display cases, office windows, parking garages and shopping



OPERATION OF DOOR

Rolling Coiling Doors can be Motor, Hand Crank, Chain Gear Reducer, Euro-Drive or Manual push up.



Industrial Door solution

9805 NW 79th Ave Bay R-13

Hialeah Gardens, FL 33016

1-800-319-7592

For more information please contact
our sales team
sales@industrialdoorsolution.com

BOTTOM BARS

Bottom Bars that are Galvanized Steel standard. Additional options include Stainless Steel, Powder Coated, Strip Seal, Pneumatic Edge, Electric Edge, Wireless Edge, Double Angle or Single. Slide Locks available on interior or



COUNTERBALANCE ASSEMBLY

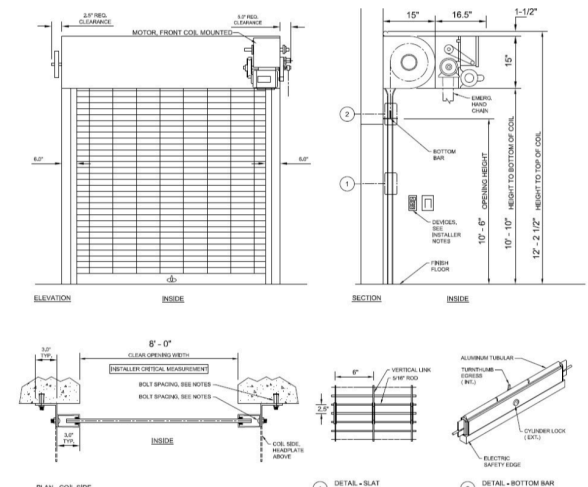
Counterbalance Assembly for Exterior or Interior Rolling Security Grilles are either Hot Rolled A36, Galvanized, Stainless Steel, Torsion Spring, Cycle 10,000 to 100,000.

CURTAIN OPTIONS

Galvanized 5/16" Steel rods standard, Stainless Steel, Powder Coated, Straight Grille and Brick Grille. For powder coating color options see links below or contact us: Exterior Powder Coatings Super Durable Powder Coatings

BRACKET PLATES

Bracket Plates can be Hot Rolled A36, Stainless Steel, Galvanized, Powder Coated, Viscous Governor, Fire Drop Charge, Charge Wheel, Motor Prep., Chain Gearing, Thru- Wall Drop Plate, Round Bracket, Square Bracket, Hex



GUIDE MATERIAL

Guide for the Rolling Security Grilles is Galvanized Steel Standard. Additional options include Stainless Steel, Powder Coated, Galvanized Structural Angles, Galvanized Rolled Formed Angles, Weather Stripping, Brush/Smoke Seal,

HOOD/COVER

The Rolling Security Grille has a hood/cover that can be Galvanized, Stainless Steel, Prime Painted metal, Powder Coated, Flame Baffle, Lintel Seal, Smoke Lintel Seal, Tension Cover, Operator Cover, Back Fascia, Round,